
Grenfell Uncovered - Open Discussion

3 JULY 2025



SPEAKERS



YOU

The Audience



MATT HODGES-LONG

Founder

Building Safety Register / TrackMyRisks

A low-angle, upward-looking photograph of several modern skyscrapers, their glass and steel facades reflecting the sky. The perspective creates a sense of height and architectural grandeur. The image is overlaid with a semi-transparent blue filter.

“Saving **lives** and **careers**
with technology”

OUR CHI

The **CHI** (Chinese: Ch'i or qi (氣), “energy force”) that underpins our business is represented by the core values we measure everything against:



Commitment

Your problem is our problem, we won't rest until it's resolved.



Humanity

People are at the heart of everything we do.



Integrity

Doing the right thing, even when no-one is watching.

LAKANAL HOUSE

16 YEARS TODAY



TOWERING INFERNO 1974



PREVIOUS DOCUMENTARIES

22 JUN 2017

3.1M Views



Sky News ✓

8.76M subscribers



Grenfell: The Fire of London

PREVIOUS DOCUMENTARIES

12 JUN 2021

1.9M Views



Dark Records ✓

594K subscribers



The Grenfell Tower fire (Disaster Documentary)

PREVIOUS DOCUMENTARIES

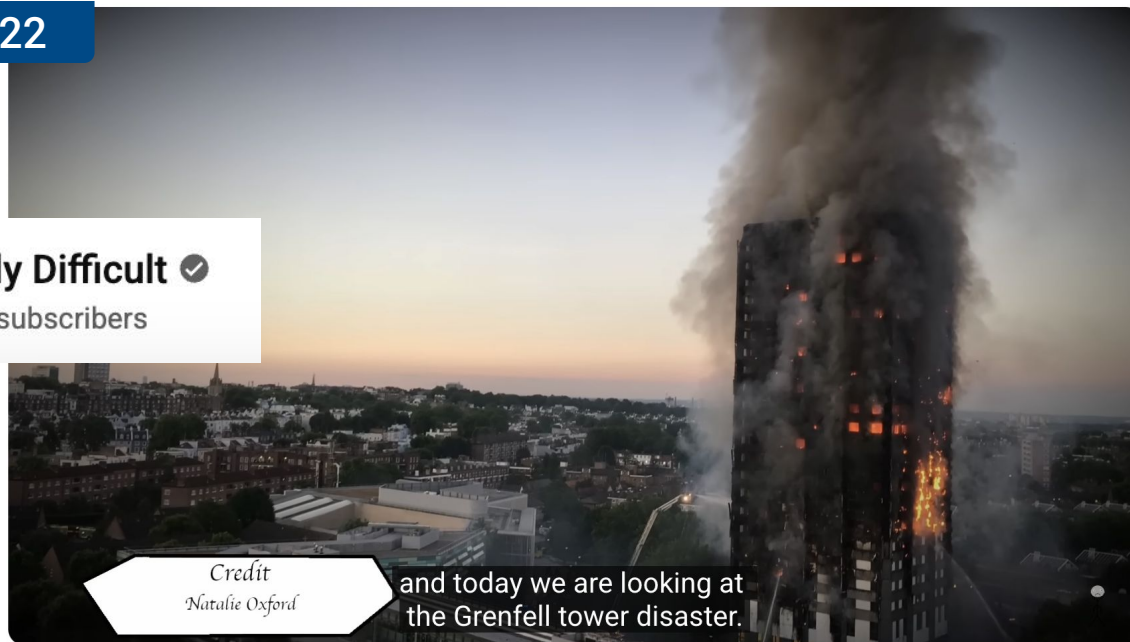
03 DEC 2022

1.1M Views



Plainly Difficult ✓

1.06M subscribers



Credit
Natalie Oxford

and today we are looking at
the Grenfell tower disaster.

The Grenfell Tower Disaster 2017 | Plainly Difficult Documentary

GRENFELL UNCOVERED

20 JUN 2025

NETFLIX



SUGGESTED TALKING POINTS

1. Human Stories

3. Villains?

5. Story Telling

2. Experts

4. Technical

6. Impact?

SAVE THE DATE(S)

LUNCH & LEARN

1st Thursday of every month

Look out for email with booking link

SEE YOU ON

3rd Sept

12:00 - 13:00

BOOK A CALL - SCAN QR CODE



MATT HODGES-LONG

Founder

Building Safety Register / TrackMyRisks



Thank you

Let's stay connected



@BldgSafetyReg



Building Safety Register

PLEASE FOLLOW



buildingsafetyregister.co.uk

